

## Sight glass level gauge CL600 bis 1500

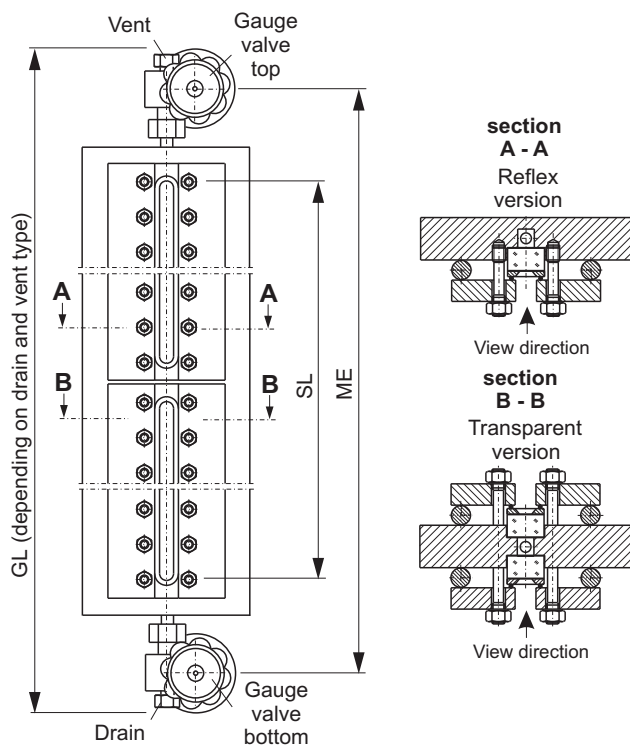
"Cold" High pressure  
 Reflex, Transparent  
 Connection top-bottom pivoted  
 Connection gauge valve to gauge chamber: union  
 Offset, handwheel

Product group **700**

Type **27**

Sheet: 1 Revision: 2

Date: 03/16



### Field of Application

Direct reading liquid level indicator for general applications up to CL1500 (depends on glass type). Increased safety with ball check valves.

### General Data

Visible length SL:  $\leq$ ME-180 mm  
 Body: 140x40 (Reflex), 200x40 (Transparent)  
 Connection gauge valve - body: union  
 Gauge valve types: see data sheet 760.53  
 Actuation: hand wheel  
 Material glass plates acc. to DIN 7081: Borosilicate  
 Material media wetted parts: CS, SS  
 Depending on delivery situation material can vary.  
 Types with special materials e. g. Hastelloy, Monel etc. are available.  
 Weight  
 - basic weight (glass type 4-11)  
   reflex / transparent: 21,0-27,0/24,0-32 kg  
 - per segment (glass type 4-11)  
   reflex / transparent: 7,9-15,6/10,4-19,8 kg  
 Depending on execution weight can vary.

### Design Data

Design pressure/-temperature: see derating  
 140x40: see data sheet BG00RE  
 200x40: see data sheet BG00RF

### Further Data

Connection gauge valve - body: see 700.VAR  
 Process connection: see 700.VAR  
 Vent: see 700.VAR  
 Drain: see 700.VAR

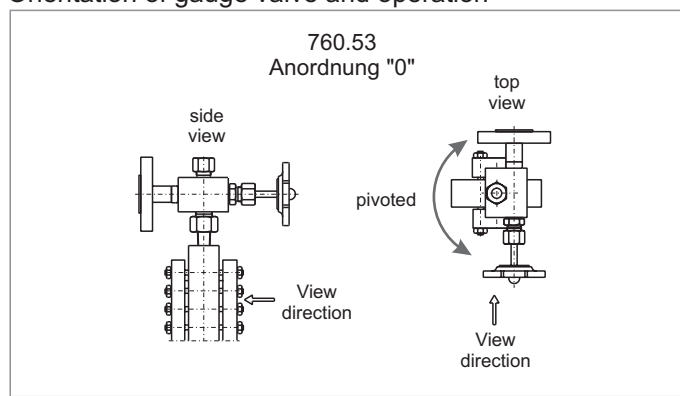
### Accessories

Glass protection etc.: see accessories  
 Frosts protection: see accessories  
 Illumination: see accessories  
 Scale: see accessories  
 Heating: see accessories

CS (= carbon steel) and SS (= stainless steel type 316SS) are materials suitable for Pressure Vessels according to EN or ASME.

Subject to alterations

### Orientation of gauge valve and operation



### Ordering no.

7 0 0 2 7 X X 5 3 X X X - X X - X X X X X X X X X - X X X X										see 700.VAR	ME [mm]										
bridging	without	0	1	1	2	5	3	X	X	X	X	X	X	X	X	X	X	X	X	results from ME	glass type
	with	1																		X spec. glass types	
glass window	Reflex (DIN 7081)	1	2	5	3	X	X	X	X	X	X	X	X	X	X	X	X	X	X	X	glass type
	Transparent (DIN 7081)	2																			
gauge valve	760.53	5	3	X	siehe Datenblatt 760.53															orientation gauge valve	

### Phönix Control Kft.

**Bolyki Tamas street 44.  
 Ozd, 3600, Hungary  
 Tel.: +36-48-572-310  
 +36-48-572-567  
 Fax.: +36-48-471-642  
 e-mail: info@phoenix-brv.hu  
 web: www.phoenix-brv.hu**